

Beginnings of SDN Mosman

sdn
children's services

"I aspire and work to cultivate the most nurturing environment at the centre where every child can thrive and have the best start to their lives."

— Sangeeta Konsam, SDN Mosman Director, 2024

SDN Children's Services begins in 1905

In 1905 a determined group of women from Sydney's upper classes who understood 'the difficulties that beset the paths of working mothers' founded the Sydney Day Nursery Association (now SDN Children's Services). The Association aimed to improve the welfare of children whose mothers were facing poverty and had to work to provide for their family. Infant mortality was high and the Kindergarten Union was only able to provide day care services for a few hours a day. With no other option, these young children were often left to fend for themselves among the streets of working class Sydney.

In response, the Association opened its first Day Nursery in a terrace house in Dowling Street, Woolloomooloo in 1905, the first long day care centre in NSW. For just three pence a day, babies and children were bathed, fed, clothed and cared for from 7.00am to 6.30pm.

Due to overwhelming demand, the Association opened Day Nurseries in other locations in the inner city soon after. These were all areas of need in Sydney with large working populations.

History of Mosman

The traditional owners of the area now known as Mosman are the Kuringgai people¹.

The area was named after Archibald Mosman, who along with his twin brother was granted land in the area in 1831 and then established a whaling station at Mosman Bay.

The landscape was beautiful but very rugged and mostly inaccessible, crossed with foot tracks. The first proper road, Avenue Road, was not built until 1860.

In the late 1800s, the Harnett family developed the area with roads, a sandstone quarry, horse drawn bus services and ferry links to the city, which allowed visitors

to enjoy picnic resorts on the foreshore. In 1893 the Municipality of Mosman was formed.

By the 1900s, Mosman was home to large federation style houses and an increasing population of artists and professionals who were drawn to the natural beauty of the area.

It is interesting to note that a long-time artistic resident of Mosman, Marianne Seemann, was the art lecturer at SDN's Nursery School Teachers' College from 1945 until 1950.

"Her Excellency the Lady Gowrie [...] opened the Mosman Nursery School yesterday afternoon"

— *The Sydney Morning Herald*, 20 May 1944

SDN plans a Nursery School in Mosman

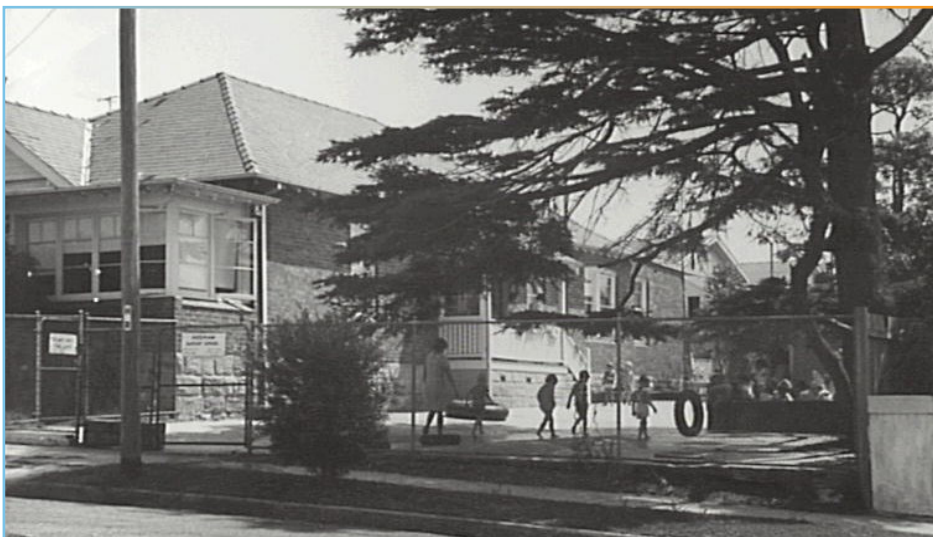
The first Nursery Schools in New South Wales were established in 1931 by the Sydney Day Nursery Association. These new Nursery Schools provided an educational program for children aged 2 to 5 years in a long day care setting.

Drawing on methods by UK Nursery School pioneers Margaret and Rachel McMillan, the Association focused primarily on opening Nursery Schools during the 1930s and 40s, as opposed to Day Nurseries.

During the Second World War, the need for the Association's Day Nurseries and Nursery Schools became urgent as more women took up work and for longer hours.

The Association's 1941/42 Annual Report observed that, "The

Below: Mosman Nursery School, c. 1960s. Image used with permission from the Mosman Local Studies Collection, Mosman Library.



problems of a country at war are reflected in the Nurseries where every branch is filled to capacity and each has a long waiting list.”

To meet this demand, the Association forged ahead with Nursery Schools where children benefitted from a ‘sound education based on modern research in child development and child guidance’.

Many councils supported the addition of Nursery Schools in their localities. To this end, Mosman Municipal Council gladly provided £100 towards establishing the Nursery School.

By 1943, the Association had purchased a residential house named ‘Benhlton’ at 33 Brierley Street in Cremorne (later Mosman) originally owned by Captain Gerard Smith. Many alterations were carried out to make it suitable as a Nursery School.

Fundraising and preparing equipment were important tasks before the Nursery School could open. One of the activities organised in 1944 was a sewing bee to make bibs, face washers, towels and blankets for the little ones. Mosman Council also helped plant a garden of roses, shrubs, palms and small trees.

Demand for the Mosman Nursery School was evident, with over 80 applications received in 1943 which far exceeded the number of places able to be offered!

SDN Mosman opens in 1944!

Mosman Nursery School was officially opened by Lady Gowrie on 19 May 1944. A local child presented flowers to the Association’s President, Donald McElhone, while the Mayor of Mosman and Council officials looked on during the ceremony.

¹Spelling sourced from: Mosman Council: Aboriginal Mosman



Above: Working bee - a member of the Mosman Nursery Committee painting children's furniture for the new Nursery School, *The Australian Women's Weekly*, 20 May 1944

There were 40 children attending the Mosman Nursery School in the first year, and a long waiting list.

Important fundraising continued, with the Mosman Nursery School Committee setting up a stall during the Association's Nursery Week fundraiser held in Hyde Park in 1945.

Parents' Clubs were formed to raise funds and make repairs to the building, garden and toys, and to install a concrete path. Fêtes and bridge parties were a popular fundraising activity at the time.



Above: Teacher and children at Mosman Nursery School, c. 1958, SDN Archive

The Nursery School endeavored to provide holistic education and care for the children. Along with activities to develop the mind, the

children were weighed periodically at Mosman Clinic and received dental care at the Association's Northern Suburbs Nursery at Crows Nest.



Above: Children painting at Mosman Nursery School, 1951, SDN Archive

The new building at SDN Mosman in 1976

In 1976, the ‘old cottage’ house was replaced with the current building at SDN Mosman. The new building provides a more suitable and modern environment for the education and care of children.

SDN Mosman today

Since its beginnings, SDN Mosman has undergone many changes, reflecting a strong connection with our families within a vibrant and diverse community.

The changes in the sector to increase the quality of early childhood education and care have confirmed our own approach to professional skilled staff and services since our beginnings.

What hasn't changed is our vision and commitment to addressing social inequalities, improving children's quality of life and enhancing the life chances for all children.

About this history and the SDN Archive

This history was put together from documents held in the SDN Archive, and information from Mosman Council and the Dictionary of Sydney. The SDN Archive, established in 2002, is a unique resource in Australia's early childhood education sector. SDN Children's Services runs 26 children's education and care centres throughout NSW and the ACT, as well as 2- programs supporting children and families and other sector organisations.

sdn
children's services